

**Xxxxxx**

**– *pitch by Xxxxxxx Xxxxxxxx***

This presentation represents an overview of initial visual treatment ideas and key plot settings.

# The Xxxxxx Woman

– xxxxxxx, xxxxxxxx, xxxxxxx















# Two Xxxxxxx

– xxxxxxx, xxxxxxx









# The Xxxxxxxxxx

– xxxxxxx, xxxxxx, xxxxxxxxxx

















# The Xxxxxxx

– xx-xxxxxx xxx, xxxxxxx xxx xxxxxxxxxxx





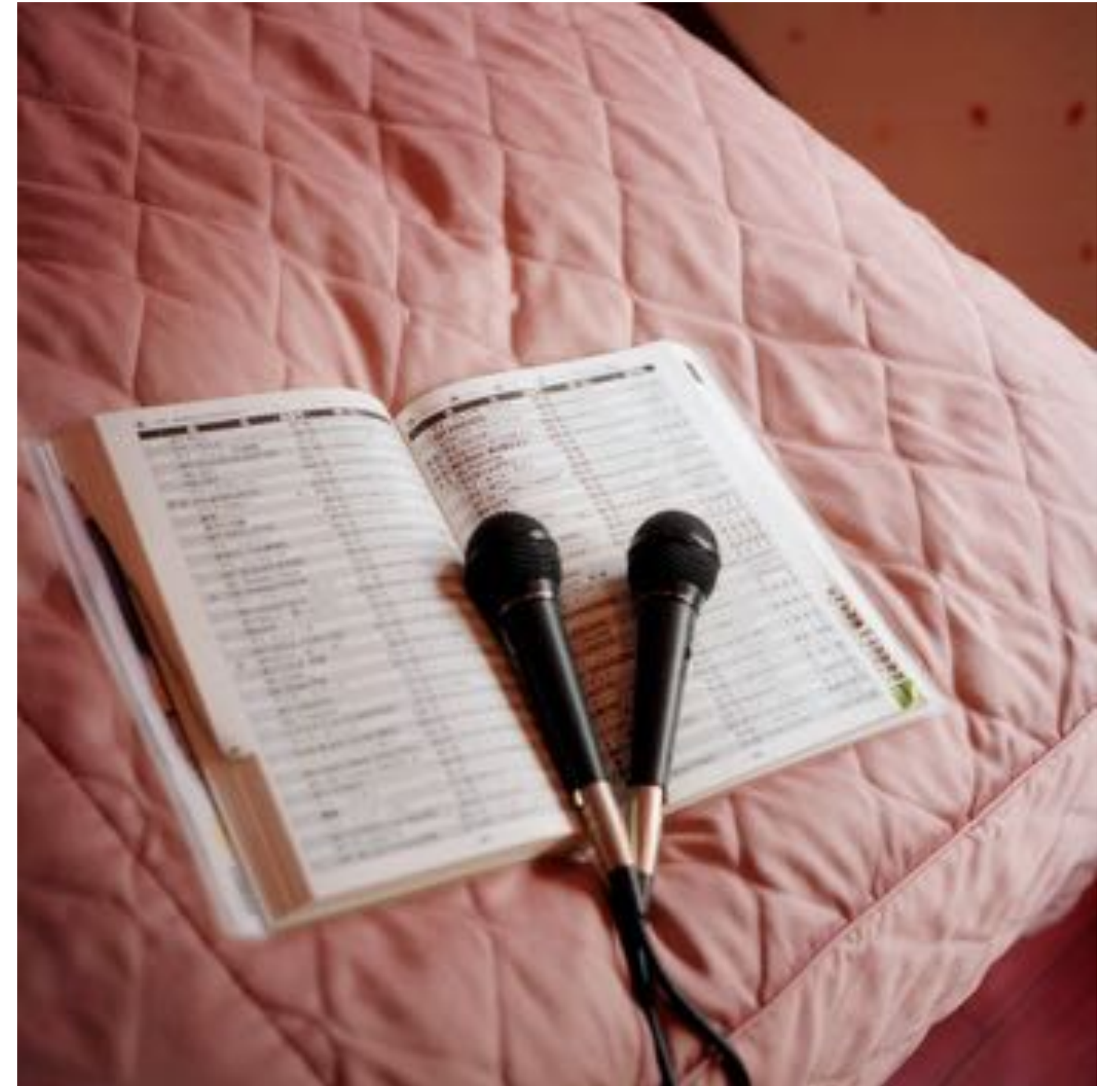
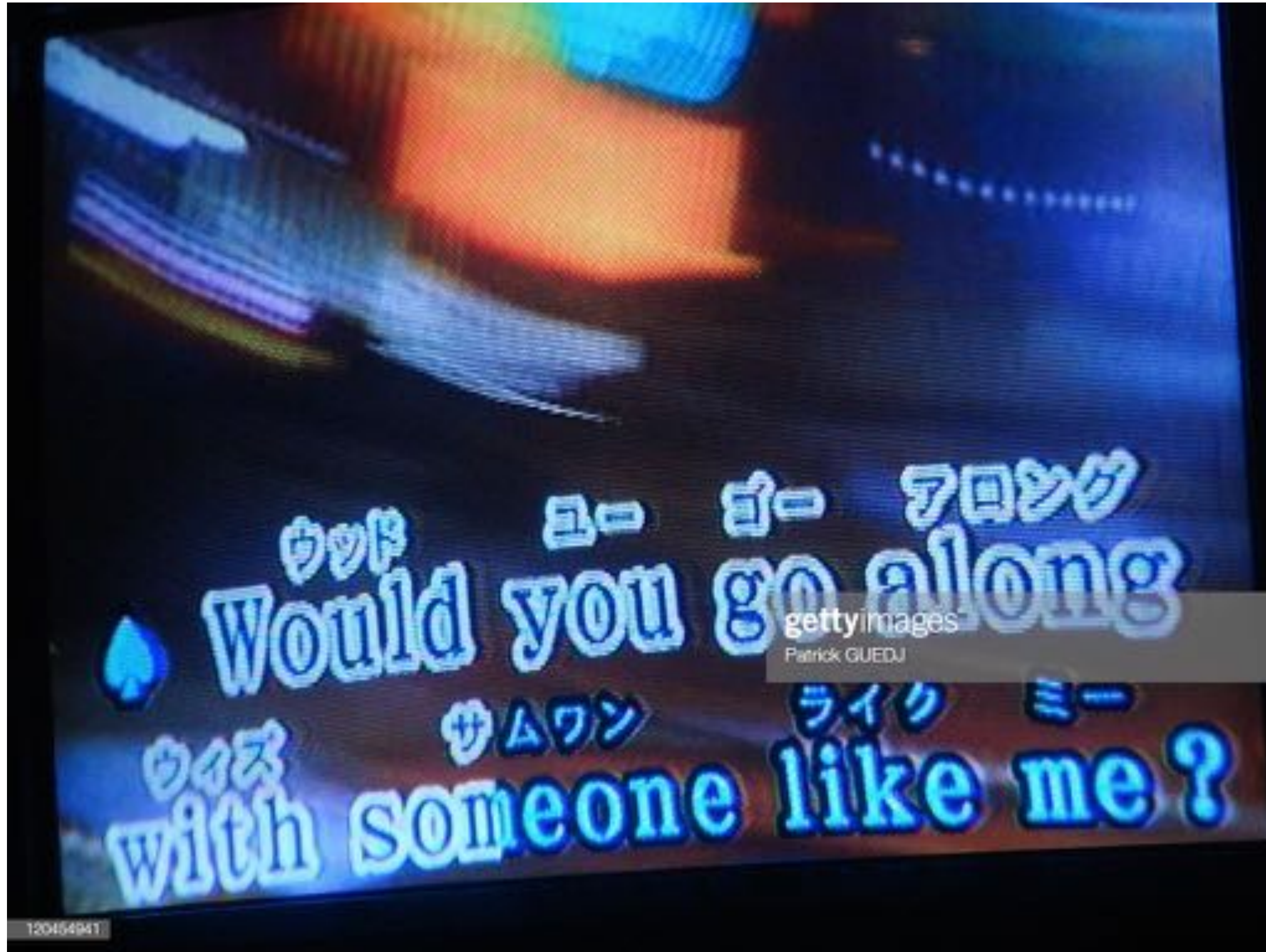




# The Xxxxxx Xxxx

– xxx xx xxxxxxxx, xxxxxxxx, xxxxxxxx









# The Xxxxxxx

– xxxxxxxxxxx, xxxx xxxxxxx





# The Xxxxxxx

– xxxxxxxx xx xxxxxxxxx









# The Xxxxxx

– Xxxxxxx xx xxxxx, xxx xxx xx xxx xxxxx



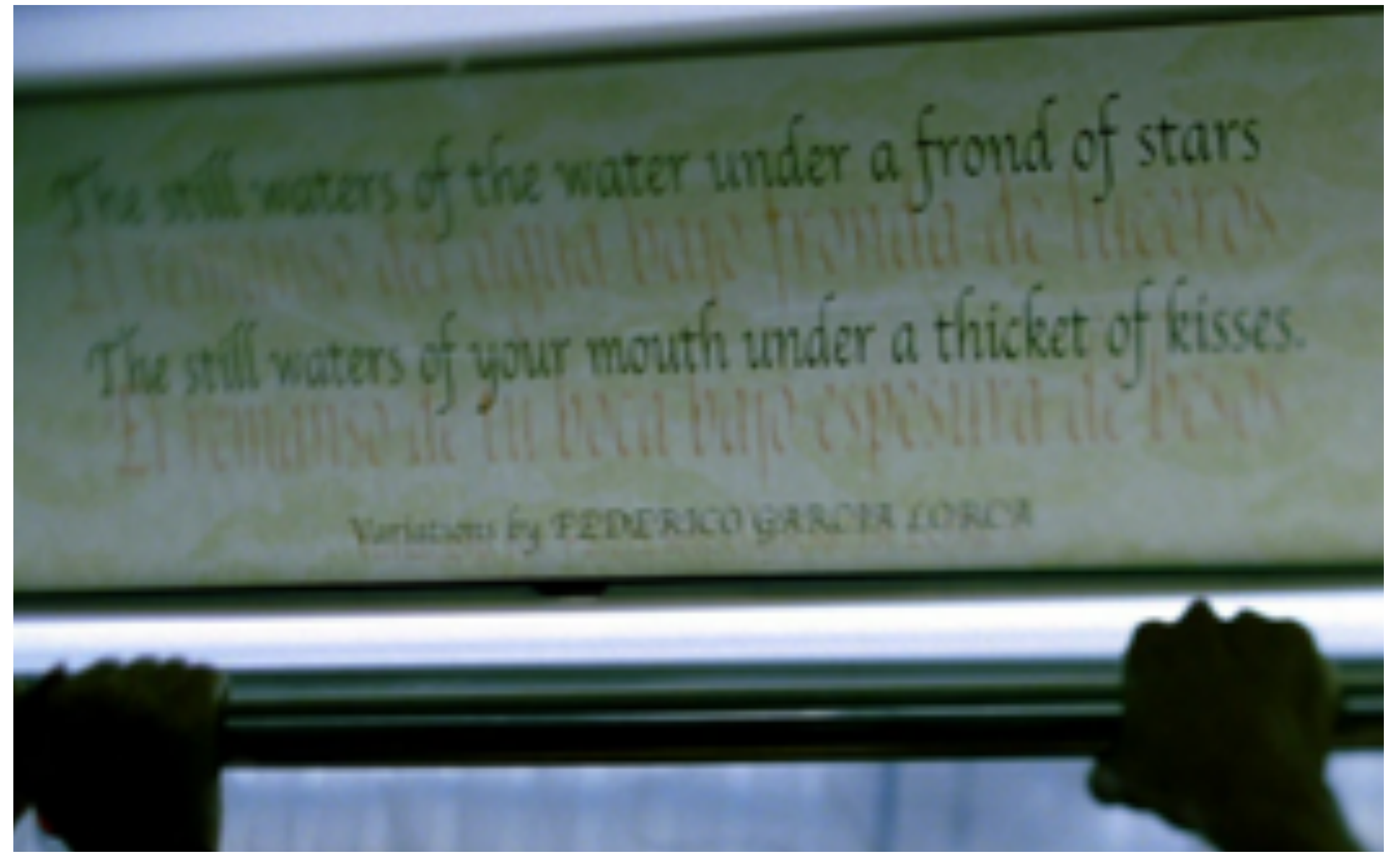




# The Xxxxxxx

– Xxxxxxx xxxxxx xxx xxxxxxxxx





Xxxxxx Xxxxxxx | Wxxxx

**Xxxxxxxxxx**

— xxxxxxxxxxx xx xxxxxxxxxxx



Xxxxxx Xxxxxxx | Wxxxx

**Xxxxxxxx**

— xxx xxxxx, xxxxxxxx, xxxxxxxxxxxx









# The Xxxxxx...

– xxxxx xxxxx xx xxxxxxxxxxxx?





Xxxxxx Xxxxxxx | Wxxxx

**Thank you.**

**Xxxxxxxxxxxxxx**